

Waste sorting and waste collection

How does it work?
Osby and Östra Göinge



What goes where?
A-Z listing, pages 8–11

 **öGRAB**®
WORKING FOR A CLEANER WORLD

Your local waste
management
partner
in the Göinge District

Sorting waste at source

Food waste

Food waste must be binned in a paper bag. This reduces the risk of unpleasant odours, helps to keep flies away and ensures that the bin is more hygienic for everyone who comes into contact with it.

You can order extra bags for compostable waste (food waste) from our homepage or over the phone. Each household receives 3 packs of bags a year free of charge.

The holder for food waste bags can be fixed in your sink cabinet. Please use the holder, as this enables air to circulate around and within the bag, which is more hygienic and reduces odours.



On the day when waste is collected, the bins should be moved as close as possible to the place where the collection vehicle can stop.

The distance between the bins and the collection vehicle must not exceed 10 metres.

Sorting waste at source means that you sort your waste at home and put it in the correct container for collection. We then take responsibility for making sure waste is recycled or reused in the best possible way. Sorting at source and recycling help to reduce your costs for waste management while also benefiting the environment.

All waste must be sorted

– See our **Sorting Guide** on www.ograb.se

Leaving unsorted waste or mixed waste for collection is not allowed.

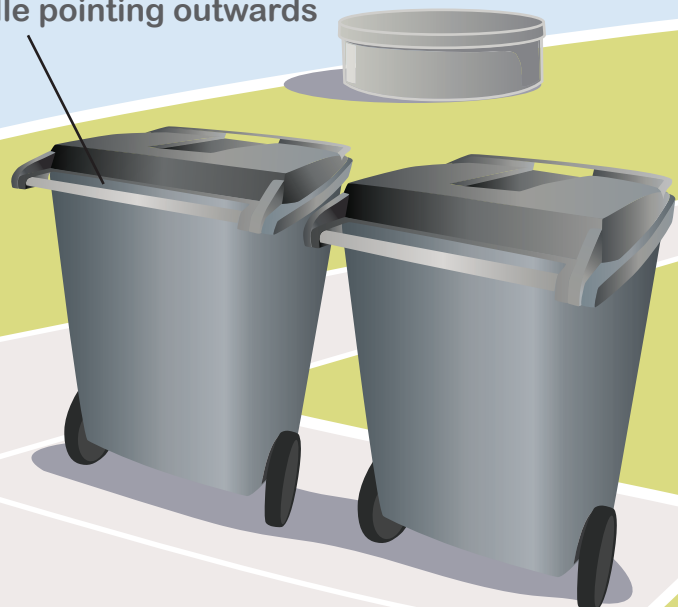
Certain kinds of waste must be bagged:

- Food waste
- Soft plastic (use the Minimizer)
- Combustible waste/Waste for incineration

The following kinds of waste may be placed loose in the bin:

- Paper packaging
- Plastic packaging
- Glass packaging
- Metal packaging
- Newspapers

Handle pointing outwards



Some people always store their bins as shown. Others prefer to stand them elsewhere and

Waste bins

- Waste containers are supplied to you, as our customer, on loan. The containers are owned by ÖGRAB.

You are responsible for storing the bins safely and for cleaning and maintenance.

- Bins must not be overfilled or excessively heavy.
- “Hook-on” boxes must be hung in place on the respective bin when they are full and require emptying.
- Where should bins be placed on waste collection days?
 - Max. 10 metres walking distance from where the waste collection vehicle stops.
 - Bins must be placed with handles facing collection personnel.
 - The path to the bins must be free from obstacles and the surface must be firm so that bins roll easily.
 - In winter the path to the bins must be clear of snow and ice.
 - Access to the property must be adequate to accommodate the waste collection vehicle.

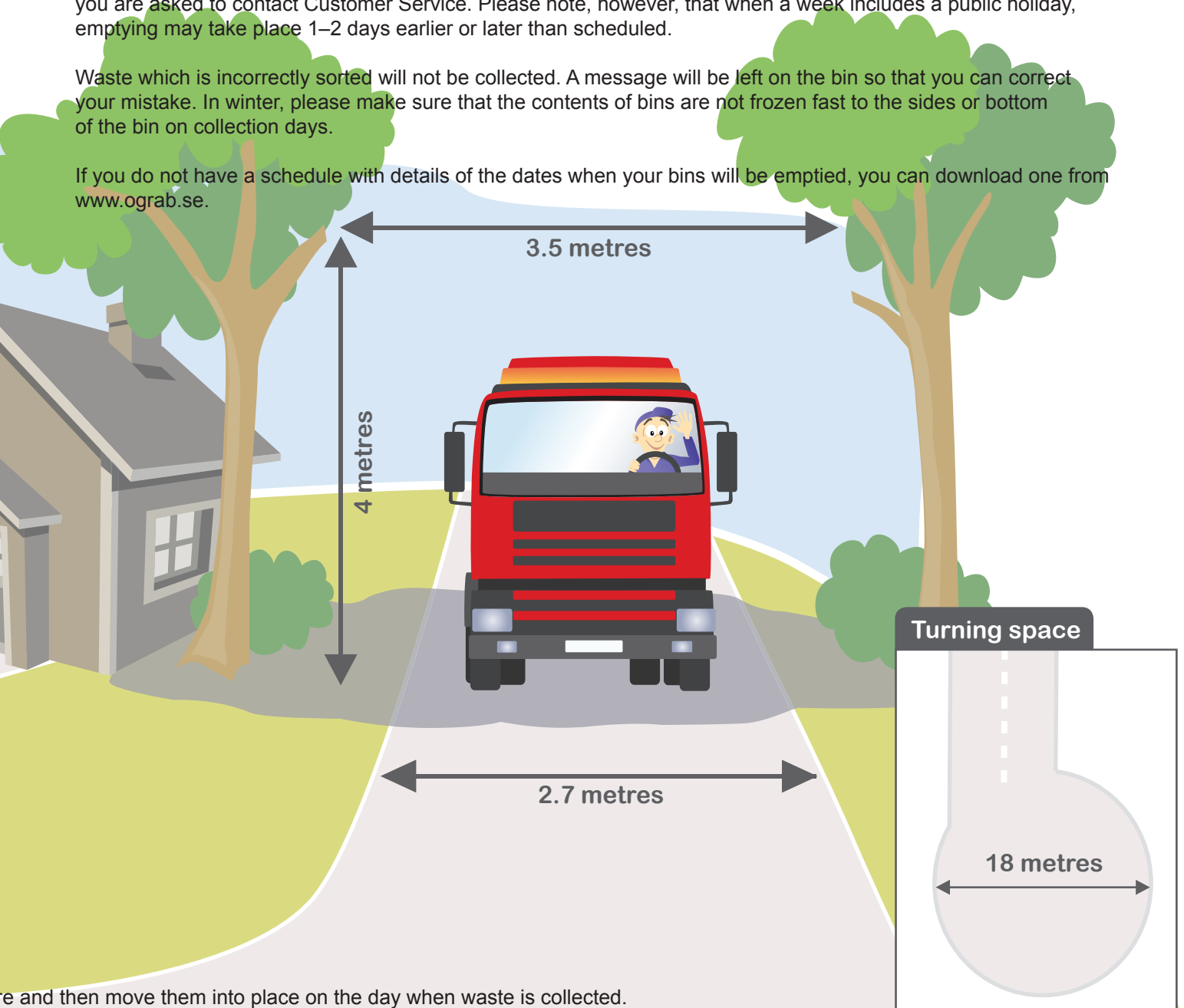
See minimum access dimensions below.

- If your bins are not emptied

Sometimes there may be a delay in emptying bins. Vehicles may break down, drivers may fall ill, etc. For this reason, leave the bins at the usual collection point until they have been emptied. If there is a delay of more than one day, you are asked to contact Customer Service. Please note, however, that when a week includes a public holiday, emptying may take place 1–2 days earlier or later than scheduled.

Waste which is incorrectly sorted will not be collected. A message will be left on the bin so that you can correct your mistake. In winter, please make sure that the contents of bins are not frozen fast to the sides or bottom of the bin on collection days.

If you do not have a schedule with details of the dates when your bins will be emptied, you can download one from www.ograb.se.



and then move them into place on the day when waste is collected.

THIS IS HOW YOU S

Bin 1 – emptied once every 4 weeks

NEWSPAPERS



TIDNINGAR

Placed loose in the relevant compartment in the bin

Newspapers, magazines, circulars, computer and writing paper, brochures, paperback books, advertising leaflets, catalogues, etc.

PAPER PACKAGING



PAPPERS-
FÖRPACKNINGAR

Placed loose in the relevant compartment in the bin

Milk cartons, sugar and flour bags, washing powder boxes, cornflakes boxes, pizza and cake cartons, wrapping paper, freezer cartons, egg boxes, paper mugs, cardboard tubes from kitchen/toilet rolls and other packaging containing at least 50% paper.

NEWSPAPERS are recycled and turned into new paper products.

PACKAGING MADE OF CARD AND PAPER is recycled to make new packaging or cardboard.

COLOURED GLASS



FÄRGAT GLAS
ENDAST FLASKOR & BURKAR

Placed loose in the relevant compartment in the bin

Bottles and jars.
Place metal caps, bottle tops and lids in metal packaging.
PLEASE NOTE! Glass other than packaging (for example, window glass, drinking glasses and coffee pots) is placed in the Landfill container or handed in at a Recycling Centre (ÅVC).

GLASS is turned into new glass products or insulation materials.

METAL PACKAGING



METALL-
FÖRPACKNINGAR

Placed loose in the relevant compartment in the bin

Tins, cans, lids, metal tubes, aluminium foil, bottle tops, empty spray cans, tealight holders and other packaging containing at least 50% metal.
Tins and cans take up less space if they are opened at both ends and flattened.
PLEASE NOTE! Metal other than packaging is placed in the Landfill container or handed in at a Recycling Centre (ÅVC).

METAL PACKAGING that is melted down and re-used saves 75% of the energy needed to produce new packaging from iron ore.

1

Batteries

Placed loose in the “hook-on” box

BATTERIES can be processed to recover metals. The plastic is separated and used in new batteries and the mercury is disposed of safely.

1

Lightbulbs

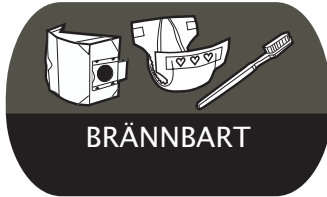
Placed loose in the “hook-on” box

LIGHTBULBS can be processed to recover glass, aluminium, luminescent coatings and plastic.

SORT YOUR WASTE

Bin 2 – emptied once every 2 weeks

COMBUSTIBLE WASTE



BRÄNNBART

Packaged

Nappies/diapers, sanitary towels, household utensils, washing-up brushes, CDs, cotton buds, envelopes, books, vacuum cleaner bags, cigarette ends, chewing gum, facecloths, baby wipes, kitchen towels, napkins, ash, soot, cat sand, pet waste bags, etc.

PLASTIC PACKAGING



PLAST-FÖRPACKNINGAR

Placed loose in the relevant compartment in the bin

Shampoo bottles, drinks bottles, ketchup bottles, plastic containers for dairy products, desserts, etc., disposable plastic mugs and plates, plastic bags, plastic foil, plastic sacks, etc. Extruded polystyrene used for packaging, and other packaging consisting of at least 50% plastic. Soft plastic is compressed and packed with the aid of the Minimizer.

COMBUSTIBLE WASTE is incinerated in heating plants to provide energy-efficient district heating.

COMBUSTIBLE WASTE

PLASTIC PACKAGING

PLASTIC PACKAGING is recycled to make loading pallets, furniture components, noise barriers and washing-up brushes.

CLEAR GLASS



OFÄRGAT GLAS
ENDAST FLASKOR & BURKAR

Placed loose in the relevant compartment in the bin

Bottles and jars.

Place metal caps, bottle tops and lids in metal packaging.

PLEASE NOTE! Glass other than packaging (for example, window glass, drinking glasses and coffee pots) is placed in the Landfill container or handed in at a Recycling Centre (ÅVC).

CLEAR GLASS

FOOD WASTE

FOOD WASTE



MATAVFALL

Well-packed in compost bags

Egg shells and potato peelings, fish remains, fruit and vegetable waste, coffee grounds, coffee filters, tea leaves, food waste from meat, fish, poultry, potatoes, vegetables, bread, cheese, cakes, etc.

GLASS is turned into new glass products or insulation materials.

FOOD WASTE is processed in an approved facility to produce biogas for use in vehicles and biofertilizer for agriculture.

2

Small electrical waste

Placed loose in the “hook-on” box

Electric shavers, mobile phones, electric toothbrushes, etc.

After dismantling and sorting, the various fractions are processed to produce new raw materials or energy, and environmentally hazardous components are safely disposed of.

This is what to do with your other waste

We can collect bulky waste items, electrical waste, hazardous waste and landfill waste from your property up to 4 times a year. Please order collection at least one week before the scheduled collection date, online via www.ograb.se or by phoning Customer Service on 044-709 59 90.

Bulky waste

Domestic waste that is too bulky to fit into the bins. This covers only the kind of large domestic items that people take with them when moving house. No interior fittings (doors, kitchen cabinets, etc.) or car parts.

Collected from your home. **Order collection** at least one week before the scheduled collection date. Maximum 10 items per collection. Bulky waste must **not** be packed in sacks.

Hand in at a staffed Recycling Centre (ÅVC). Waste fractions may be sorted differently at different Recycling Centres. Always ask staff for instructions.



Hazardous waste

Oil, paint, solvents, etc.

Collected from your home if items can fit into the Hazardous waste container. Always specify the contents of the box when ordering collection.

Order collection online or by phone (as described above).

Hand in at a staffed Recycling Centre (ÅVC). The contents of bottles and jars, etc. must be clearly labelled. If you are uncertain about anything, contact Recycling Centre staff.



Landfill

Porcelain, ceramics, pots, pans, mirrors, etc.

Collected from your home in the Landfill container when this is full. **Order collection** online or by phone (as described above).

Hand in at a staffed Recycling Centre (ÅVC).



Electrical waste

TV, radio, computer, household appliances, refrigerator, freezer, etc.

Collected from your home. **Order collection** online or by phone (as described above). Fluorescent tubes (max. 3 packed together) may be placed beside the bin for collection.

Hand in at a staffed Recycling Centre (ÅVC).



Garden waste

Grass cuttings, moss, branches, leaves, etc.

Collected from your home. You can subscribe for a garden waste bin, 370 litres or 240 litres in size. The bin is emptied once every two weeks between March and November. Your subscription entitles you to collect 1 cubic metre of compost soil from the Recycling Facility in Kattarp. Contact staff there on arrival. Phone us to arrange a subscription for garden waste collection.

Hand in at a staffed Recycling Centre (ÅVC).



Textiles

Clothing, towels, bedding, covers, curtains, etc.

Deposit in containers located in urban areas, **or hand in** at a staffed Recycling Centre (ÅVC). Thanks to technical advances it is now possible to recover fibres from worn textiles. Clothes, shoes and accessories that can be re-used are sent to people in need in other countries, or sold to generate income for aid organisations.

By depositing your old textile products in the green containers, you are also doing the environment a good turn. Recycling textiles also saves us the cost of incinerating them.

Go to www.ograb.se to find out where our Textile containers are located.



Medicines

Medicines and hypodermic needles.

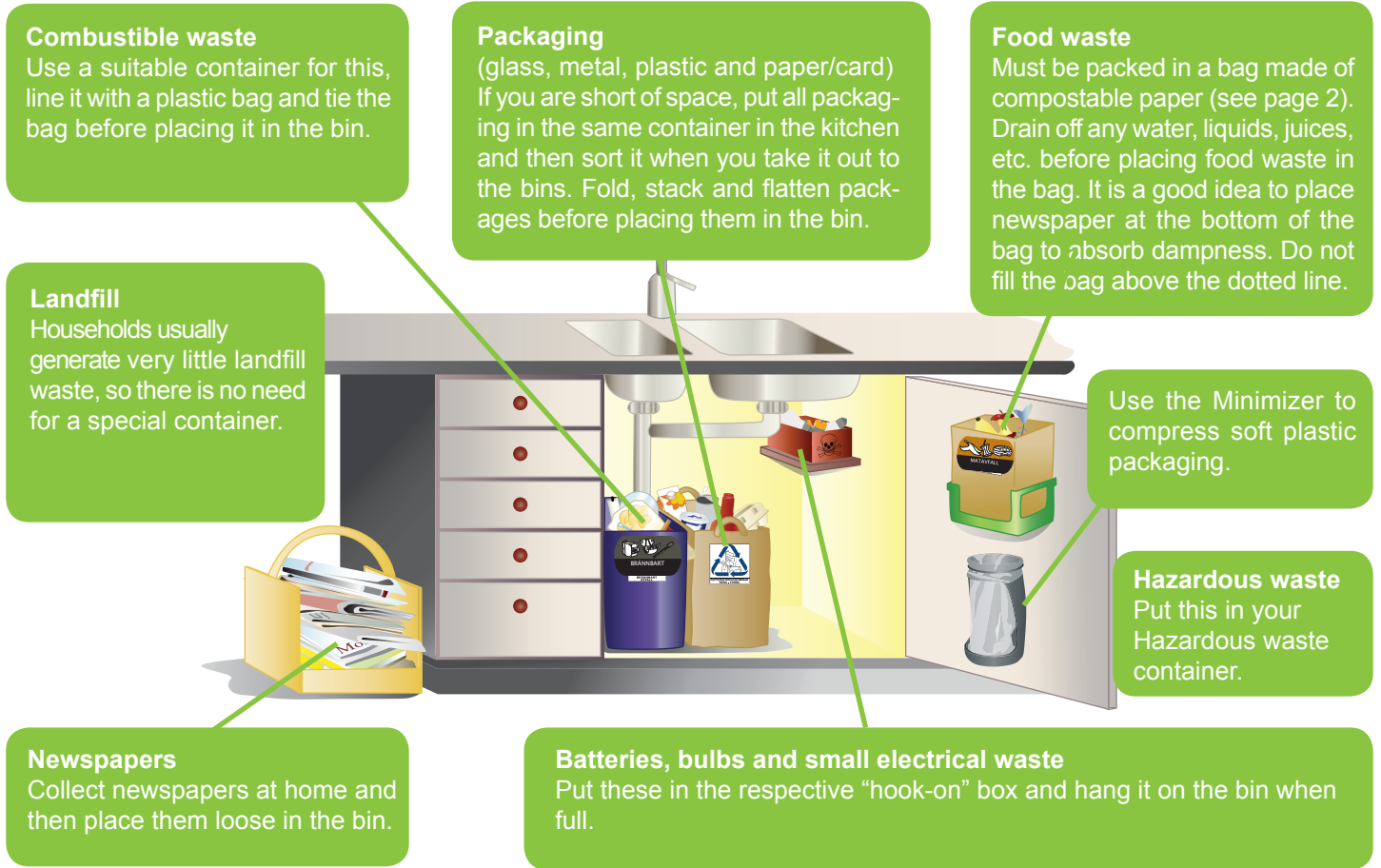
Hand in at a chemist's.

Medicines: place medicines in a transparent plastic bag or one of the special medicine waste bags available from the chemist's. Chemists do not accept discarded medical thermometers or used batteries. Hypodermic needles: return these in the special container available free of charge from the chemist's. It is prohibited to dispose of hypodermic needles as combustible waste. However, once the needle has been removed, the syringe itself may be placed in combustible waste. The container for hypodermic needles is returned to the chemist's when full.



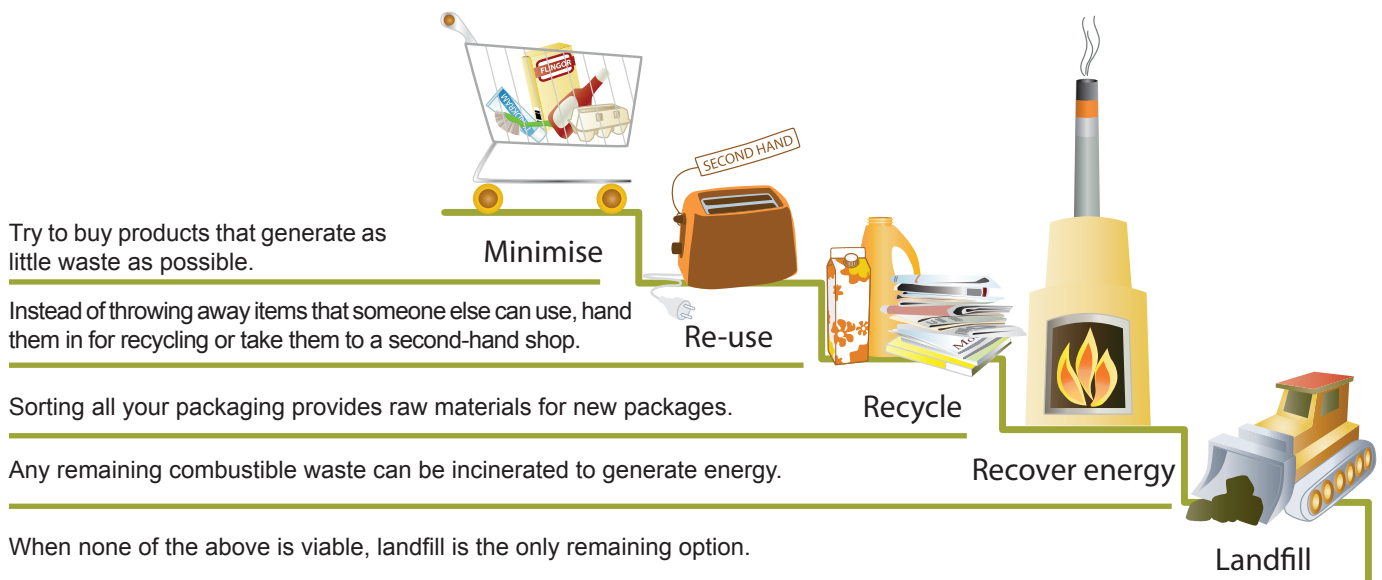
Tips for simple sorting at home

Households are required to sort their waste into between 9 and 12 different fractions. However, you don't need to sort everything directly in the kitchen. You can put all packaging in the same container and then sort it when you take it out to the bins.



The waste hierarchy

It is important that we all play our part in reducing the amount of waste we generate.



© Mediavisionsweden

What goes where?

A - C

A	
acetone	hazardous waste! (p.6)
acid	hazardous waste! (p.6)
adhesive	hazardous waste! (p.6)
advertising mail	newspapers
aluminium can (deposit)	redeem in store/metal pkg.
aluminium can (no deposit)	metal packaging
aluminium foil	metal packaging
aluminium tray	metal packaging
ammonia	hazardous waste! (p.6)
ammunition	Contact the Police
amplifier	electrical waste (page 6)
asbestos (packaged) < 100 kg	hazardous waste! (ÅVC)
ashes (packaged)	combustible waste
B	
baby stroller	bulky waste
baby's pacifier/dummy	combustible waste
bag (cloth)	textiles (page 6)
bag-in-box (box)	paper packaging
bag-in-box (plastic liner)	plastic packaging
baking paper	combustible waste
baking tray (foil)	metal packaging
baking tray (paper)	combustible waste
banana skin	food waste
band aid	combustible waste
bandage	combustible waste
bathtub	bulky waste (page 6)
battery	"hook-on" box 1
battery charger	"hook-on" box 2
beer can (deposit)	redeem deposit in store
beer can (no deposit)	metal packaging
beer crate	redeem deposit in store
bicycle	bulky waste (page 6)
binder	combustible waste
blister pack > 50% plastic	plastic packaging
blister pack >50% metal	metal packaging
bones	food waste
book (hard cover)	combustible waste
book (paperback)	newspapers
boots (usable)	textiles (page 6)
boots (worn out)	combustible waste
bottle top (metal)	metal packaging
bottle top (plastic)	plastic packaging
bottles (glass)	glass packaging
bread	food waste
brush	combustible waste
brush cleaner	hazardous waste! (p.6)
bulb	"hook-on" box 1

C	
calculator	"hook-on" box 2
caller ID	"hook-on" box 2
camera	"hook-on" box 2
can	metal packaging
candle	combustible waste
car battery	hazardous waste! (p.6)
car radio	electrical waste (page 6)
car tyre	return to tyre dealer
car wax	hazardous waste! (p.6)
cardboard	paper packaging
cassette tape	combustible waste
cat sand (packed)	combustible waste
catalogue	newspapers
catheter bag (empty)	combustible waste
caustic soda	hazardous waste! (p.6)
CD	combustible waste
CD case	combustible waste
CD player	electrical waste (page 6)
cellophane	plastic packaging
ceramics	landfill (ÅVC)
charcoal briquettes (cool, packed)	combustible waste
chewing gum	combustible waste
chocolate wrapper (paper)	paper packaging
chocolate wrapper (plastic)	plastic packaging
chopping board (plastic)	combustible waste / ÅVC
Christmas tree	bulky waste (page 6)
cigarette lighter	combustible waste
cigarette packet	paper packaging
cigarette stump	combustible waste
clay pot	landfill (ÅVC)
cleaning cloth	combustible waste
clock (battery or electric)	"hook-on" box 2
clock radio	"hook-on" box 2
cloth (textile)	textiles
clothes (usable)	textiles (page 6)
clothes (worn out)	textiles (page 6)
clothes hanger	combustible waste
clothes peg	combustible waste
coffee cup/saucer	landfill
coffee filter + grounds	food waste
coffee machine	electrical waste (page 6)
colostomy bag	combustible waste
computer	electrical waste (page 6)
computer monitor	electrical waste (page 6)
cooking oil	oil recycling (ÅVC)

cordial bottle (glass)	glass packaging
cordial bottle (plastic)	plastic packaging
cork (natural)	combustible waste
cork (plastic)	plastic packaging
corn flakes packet	paper packaging
corrugated cardboard	paper packaging
corrugated card (large amount)	Recycling Centre (ÅVC)
cosmetics	combustible waste
cotton buds	combustible waste
cushion (large)	bulky waste (page 6)
cushion (small)	combustible waste
cutlery (metal)	landfill (ÅVC)
cutlery (plastic)	combustible waste
cycle tyre	combustible waste
D	
deep fryer	electrical waste (page 6)
detergent box (card)	paper packaging
detergent drum (plastic)	plastic packaging
detergent refill	plastic packaging
diaper	combustible waste
dimmer switch	“hook-on” box 2
dishcloth	combustible waste
dishwasher	electrical waste (page 6)
disposable mug/plate (paper)	paper packaging
disposable plate (plastic) soiled	combustible waste
disposable razor	combustible waste
drinking glass	landfill (ÅVC)
duster	combustible waste
DVD	combustible waste
DVD player	electrical waste (page 6)
E	
egg boiler	electrical waste (page 6)
egg box	paper packaging
eggshell	food waste
electric cable	“hook-on” box 2
electric curler iron	“hook-on” box 2
electric drill	electrical waste (page 6)
electric grill	electrical waste (page 6)
electric hob	electrical waste (page 6)
electric iron	electrical waste (page 6)
electric kettle	electrical waste (page 6)
electric mower	electrical waste (page 6)
electric shaver	“hook-on” box 2
electric toaster	electrical waste (page 6)
envelope	combustible waste
eraser	combustible waste
eternit (fibre cement)	hazardous waste! (ÅVC)
extruded polystyrene (building)	combustible waste
extruded polystyrene (packaging)	plastic packaging

F	
face-cloth	combustible waste
fan	electrical waste (page 6)
fat (foodstuff)	oil recycling (ÅVC)
feeding bottle	combustible waste
fire extinguisher	hazardous waste! (p.6)
fireworks (used)	combustible waste
fish remains	food waste
fitted carpet	bulky waste (page 6)
flour bag	paper packaging
flowerpot (clay/ceramic)	landfill (ÅVC)
fluorescent tube	electrical waste (page 6)
folder	combustible waste
food leftovers	food waste
food mixer	electrical waste (page 6)
food processor	electrical waste (page 6)
fountain pen	combustible waste
freezer	electrical waste (page 6)
fridge	electrical waste (page 6)
fruit	food waste
frying oil	oil recycling (ÅVC)
frying pan	landfill (ÅVC)
furniture	bulky waste (page 6)
fuse	landfill
G	
garden swing seat	bulky waste (page 6)
gift wrap	paper packaging
glass (broken)	landfill (ÅVC)
glass bottle	glass packaging
glass jar	glass packaging
glue	hazardous waste! (p.6)
glycol	hazardous waste! (p.6)
grass cuttings	garden waste
gravel (small amount)	landfill
grill	bulky waste (page 6)
gypsum	landfill (ÅVC)
H	
hair dryer	“hook-on” box 2
halogen bulb	“hook-on” box 1
handbag	textiles (page 6)
handkerchief	textiles (page 6)
house plant (without pot)	food waste
household utensils (metal)	landfill (ÅVC)
household utensils (plastic/wood)	combustible waste
hypodermic syringe (in container)	medicines (p.6)

What goes where? I - Q

I	
impregnated timber	hazardous waste! (Kattarp,AVC)
inhaler	combustible waste
ink cartridge (for printer)	combustible waste
insecticide	hazardous waste! (p.6)
insulation materials	landfill (AVC)
J	
jerry can (plastic), cork removed	plastic packaging
juice packet	paper packaging
K	
ketchup bottle (glass)	glass packaging
ketchup bottle (plastic)	plastic packaging
kitchen roll	combustible waste
knife (metal)	landfill (AVC)
L	
lamp (small)	"hook-on" box 2
leather	combustible waste
leaves	garden waste
leca (clay) pebbles	combustible waste
lightbulb	"hook-on" box 1
light fitting	electrical waste (page 6)
lighter fluid	hazardous waste! (p.6)
loudspeaker	electrical waste (page 6)
low-energy bulb	"hook-on" box 1
M	
margarine packaging(plastic)	plastic packaging
margarine wrapper (paper)	paper packaging
mattress	bulky waste (page 6)
meat tray (paper)	food waste
meat tray (plastic)	plastic packaging
meat tray (styrofoam)	plastic packaging
medical thermometer (digital)	"hook-on" box 2
medical thermometer (mercury)	hazardous waste! (p.6)
medicaments	medicines (page 6)
microwave oven	electrical waste (page 6)
milk packet	paper packaging
mirror glass	landfill (AVC)
mobile phone	"hook-on" box 2
motor oil	hazardous waste! (p.6)
mower (hand-operated)	bulky waste (page 6)
N	
nail varnish	hazardous waste! (p.6)
nails	landfill (AVC)
napkin	combustible waste
nappy	combustible waste
newspaper	newspapers
note pad	combustible waste
nylon stocking	textiles (page 6)

O	
oasis (floral) block	combustible waste
oil (motor / gearbox)	hazardous waste! (p.6)
oil filter	hazardous waste! (p.6)
orange peel	food waste
outdoor torch	metal packaging
P	
paint	hazardous waste! (p.6)
paint tin (metal – empty)	metal packaging
paint tin (plastic – empty)	plastic packaging
pan	landfill (AVC)
paper bag	paper packaging
paper plate (soiled)	combustible waste
paper plate/mug (clean)	paper packaging
paper roll	paper packaging
paper towel	combustible waste
paperback book	newspapers
pen	combustible waste
perfume	hazardous waste! (p.6)
pesticide	hazardous waste! (p.6)
pet waste bag (sealed)	combustible waste
petrol	hazardous waste! (p.6)
photocopier	electrical waste (page 6)
photographs	combustible waste
plant compost (small amount)	food waste
plant pot (clay or ceramic)	landfill (AVC)
plant pot (plastic)	combustible waste
plant pot (plastic inner pot)	plastic packaging
plant pot (plastic outer pot)	combustible waste
plastic bag	plastic packaging
plastic bottle (not PET)	plastic packaging
plastic bottle (PET)	redeem deposit in store
plastic foil/cling film	plastic packaging
plastic mug (disposable)	plastic packaging
plastic packaging	plastic packaging
plate (ceramic)	landfill (AVC)
porcelain	landfill (AVC)
potato chip bag (paper)	paper packaging
potato chip bag (plastic)	plastic packaging
potato chip tube (Pringles)	paper packaging
pots	landfill (AVC)
pram	bulky waste
printer for PC	electrical waste (page 6)
putty	hazardous waste! (p.6)
Q	
quarry tiles (small amount)	landfill (AVC)
quilt	textiles (page 6)

R	
radiator (electric)	electrical waste (page 6)
radio	electrical waste (page 6)
rainwear	textiles (page 6)
rat poison	hazardous waste! (p.6)
razor (metal)	landfill (ÅVC)
razor blade	landfill
rechargeable equipment	electrical waste (page 6)
record player	electrical waste (page 6)
refrigerator	electrical waste (page 6)
remote control	“hook-on” box 2
rubber items	combustible waste
rug (large)	bulky waste (page 6)
rug (small)	textiles (page 6)
S	
sanitary towel	combustible waste
satellite dish antenna	electrical waste (page 6)
scissors	landfill (ÅVC)
screws	landfill (ÅVC)
seafood (packed in newspaper)	food waste
serviette	combustible waste
sewing machine	electrical waste (page 6)
shampoo bottle (top removed)	combustible waste
shoes (usable)	textiles (page 6)
shoes (worn out)	combustible waste
shower curtain	combustible waste
skin cream, etc.	combustible waste
smoke alarm	“hook-on” box 2
snuff	food waste
snuff box (paper)	paper packaging
snuff box (plastic)	plastic packaging
soil (small amount)	food waste
solvent	hazardous waste! (p.6)
soot (packaged)	combustible waste
spectacles	landfill/aid organisations
sponge	combustible waste
spray bottle, plastic (empty)	plastic packaging
spray can with contents	hazardous waste! (p.6)
spray can, metal (empty)	metal packaging
stain remover	hazardous waste! (p.6)
steel wool	landfill (ÅVC)
sticking plaster	combustible waste
stove	electrical waste (page 6)
styrofoam (EPS) chips	plastic packaging
suitcase	bulky waste (page 6)
T	
tablecloth	textiles (page 6)
tablecloth (paper, plastic)	combustible waste
tablet tube, metal	metal packaging
tablet tube, plastic	plastic packaging
tampon	combustible waste

tape recorder	electrical waste (page 6)
teabag	food waste
tealight holder (metal)	metal packaging
telephone	“hook-on” box 2
telephone directory	newspapers
textiles	textiles (page 6)
thermometer (digital)	“hook-on” box 2
thermometer (mercury)	hazardous waste! (p.6)
thermometer, plastic	combustible waste
thermos flask, metal	landfill (ÅVC)
tiles (small amount)	landfill (ÅVC)
tin can	metal packaging
toilet bowl	bulky waste (page 6)
toner for printer	combustible waste
tools	landfill
toothbrush	combustible waste
toothbrush (electric)	“hook-on” box 2
torch	“hook-on” box 2
towel	textiles
toy (electric)	electrical waste (page 6)
toy (plastic/metal)	combustible waste
toy (wood/plastic)	combustible waste
tube (metal)	metal packaging
tube (plastic)	plastic packaging
turpentine	hazardous waste! (p.6)
TV	electrical waste (page 6)
TV remote	“hook-on” box 2
tyre	return to tyre dealer
U	
umbrella	combustible waste
V	
vacuum cleaner	electrical waste (page 6)
vacuum cleaner bag	combustible waste
vegetables	food waste
video recorder	electrical waste (page 6)
videotape	combustible waste
vinyl record	combustible waste
W	
waffle iron	electrical waste (page 6)
washbasin	bulky waste (page 6)
washing machine	electrical waste (page 6)
washing-up brush	combustible waste
weedkiller	hazardous waste! (p.6)
window envelope	combustible waste
window glass	landfill (ÅVC)
wood stain	hazardous waste! (p.6)
wooden items (small)	combustible waste
wrapping paper	paper packaging
Y	
yoghurt carton (card)	paper packaging
yoghurt tub (plastic)	plastic packaging

RECYCLING CENTRE OPENING HOURS

Your subscription to waste collection services authorises you to deposit sorted fractions of domestic waste in our Recycling Centres (ÅVC). Householders may deposit as much waste as can be safely carried on a trailer behind a private car. Larger amounts of waste must be deposited at Kattarp.

Main office: Kattarp Switchboard 044-790 59 80 Customer Service 044-790 59 90

	Mon	Tues	Wed	Thurs	Fri	Sat
Kattarp (Specified ÅVC deposits only.) Tel: 044-790 59 93	7-16	7-18	7-16	7-16	7-16	8-14
Osby Mossvägen 35 Tel: 044-790 59 88		8-12 12.45-16		10-12 12.45-18		☀ 8.30-12.30 ✳ 3rd Sat every month 8.30-12.30
Lönsboda Nytebodavägen 32 Tel: 044-790 59 88	10-12 12.45-18		8-12 12.45-16			☀ 8.30-12.30 ✳ Last Sat every month 8.30-12.30
Sibbhult Industrigatan 1 Tel: 044-790 59 89	10-12 12.45-18		8-12 12.45-16			☀ 8.30-12.30 ✳ 2nd Sat every month 8.30-12.30
Knislinge Lertagsvägen Tel: 044-790 59 89		10-12 12.45-18		8-12 12.45-16		☀ 8.30-12.30 ✳ 1st Sat every month 8.30-12.30
Killeberg Brunnsgatan 6						☀ 8.30-12.30 ✳ 8.30-12.30

☀ = 1 April – 30 Sept ✳ = 1 Oct – 31 March
Always check opening hours on www.ograb.se

We have installed a barrier at the entrance to our Recycling Centres (ÅVC) in Kattarp, Osby and Knislinge. As a subscriber to our waste collection services, you can raise the barrier by scanning your driving licence. (Please note: Swedish driving licence only!) If there are other members of your household who would like to use this service, they can register their driving licence by completing an online form on our website: www.ograb.se or by filling out a form that is available at our Recycling Centres.

If you do not have a Swedish driving licence you may apply for a pass that will give you access to the Recycling Centre.



CONTACT US

Website: www.ograb.se **epost:** info@ograb.se

Customer Service: 044-790 59 90 **Weighbridge/Transhipments/ÅVC:** 044-790 59 80

Adress: Östra Göinge Renhållnings AB – Avfallsanläggningen 2373 C Kattarp 280 60 Broby

